



Kingsgate Consolidated Limited

**Growing a Premier Mid-Tier Gold Miner
in Asia/Pacific**

**Denver Gold Forum
September 2011**



Disclaimer

Forward Looking Statements:

These materials include forward looking statements. Forward looking statements inherently involve subjective judgment & analysis & are subject to significant uncertainties, risks & contingencies, many of which are outside of the control of, & may be unknown to, the company.

Actual results and developments may vary materially from that expressed in these materials. The types of uncertainties which are relevant to the company may include, but are not limited to, commodity prices, political uncertainty, changes to the regulatory framework which applies to the business of the company & general economic conditions. Given these uncertainties, readers are cautioned not to place undue reliance on such forward looking statements.

Forward looking statements in these materials speak only at the date of issue. Subject to any continuing obligations under applicable law or any relevant stock exchange listing rules, the company undertakes any obligation to publicly update or revise any of the forward looking statements, changes in events, conditions or circumstances on which any such statement is based.

Some statements in this presentation regarding estimates or future events are forward looking statements. They involve risk and uncertainties that could cause actual results to differ from estimated results. Forward looking statements include estimates of future production, cash and total costs per ounce of production, reserve and mineralized material estimates, capital costs, and other estimates or prediction of future activities. They include statements preceded by words such as “believe,” “estimate,” “expect,” “intend,” “will,” and similar expressions. Actual results could differ materially depending on such things as political events, labour relations, currency fluctuations and other general economic conditions, market prices for Dominion Mining Limited and/or Kingsgate Consolidated Limited products, timing of permits and other government approvals and requirements, changes in operating conditions, lower than expected ore grades, unexpected ground and mining conditions, availability and cost of materials and equipment, and risks generally inherent in the ownership and operation of mining properties and investment in foreign countries.



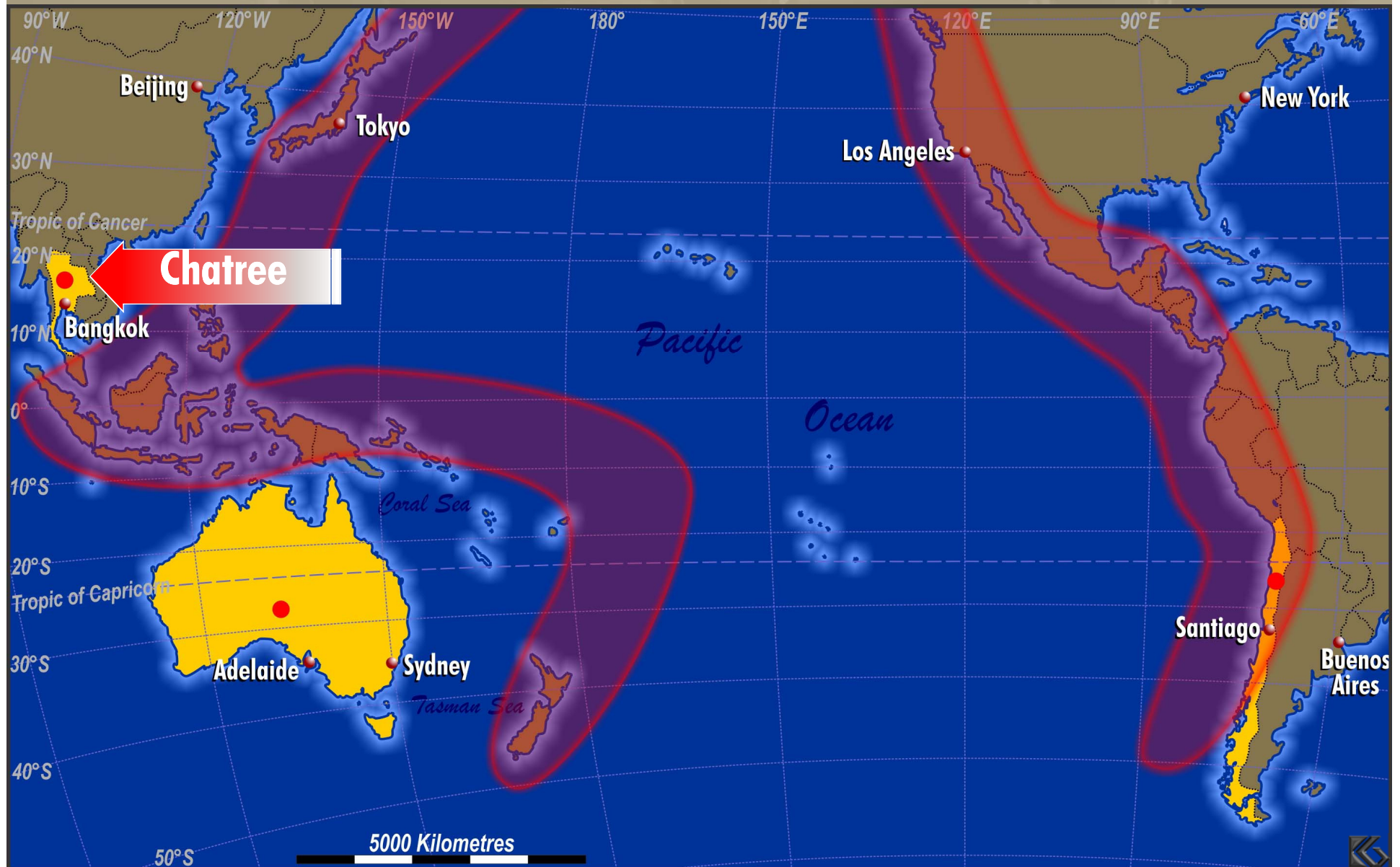
A Year of Transition

- **Second gold mine – Challenger in Sth Aust.**
- **Added advanced Ag/Au project in Chile (KCN acquired 70% of Laguna Resources)**
- **Chatree expansion to +5Mtpa on time for completion in Sept 11 and ~5% under budget**
- **Enhanced Arqueros by adding Esperanza and Chimberos leases - Feasibility progressing well**
- **Strong growth pipeline following purchase of Bowdens silver project in NSW (Aust)**



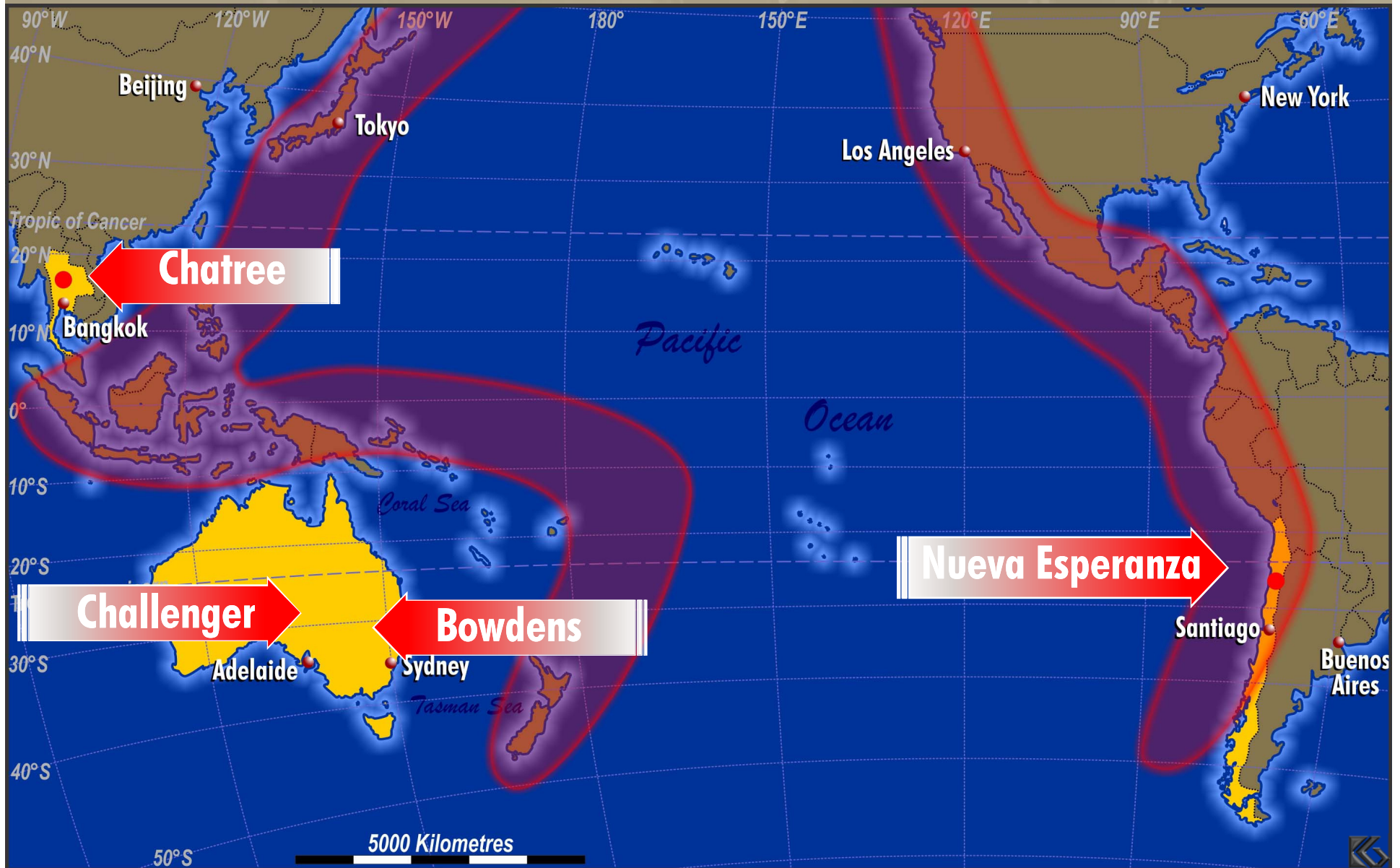
Precious Metals in the Pacific Rim

2010 - One Mine One Country



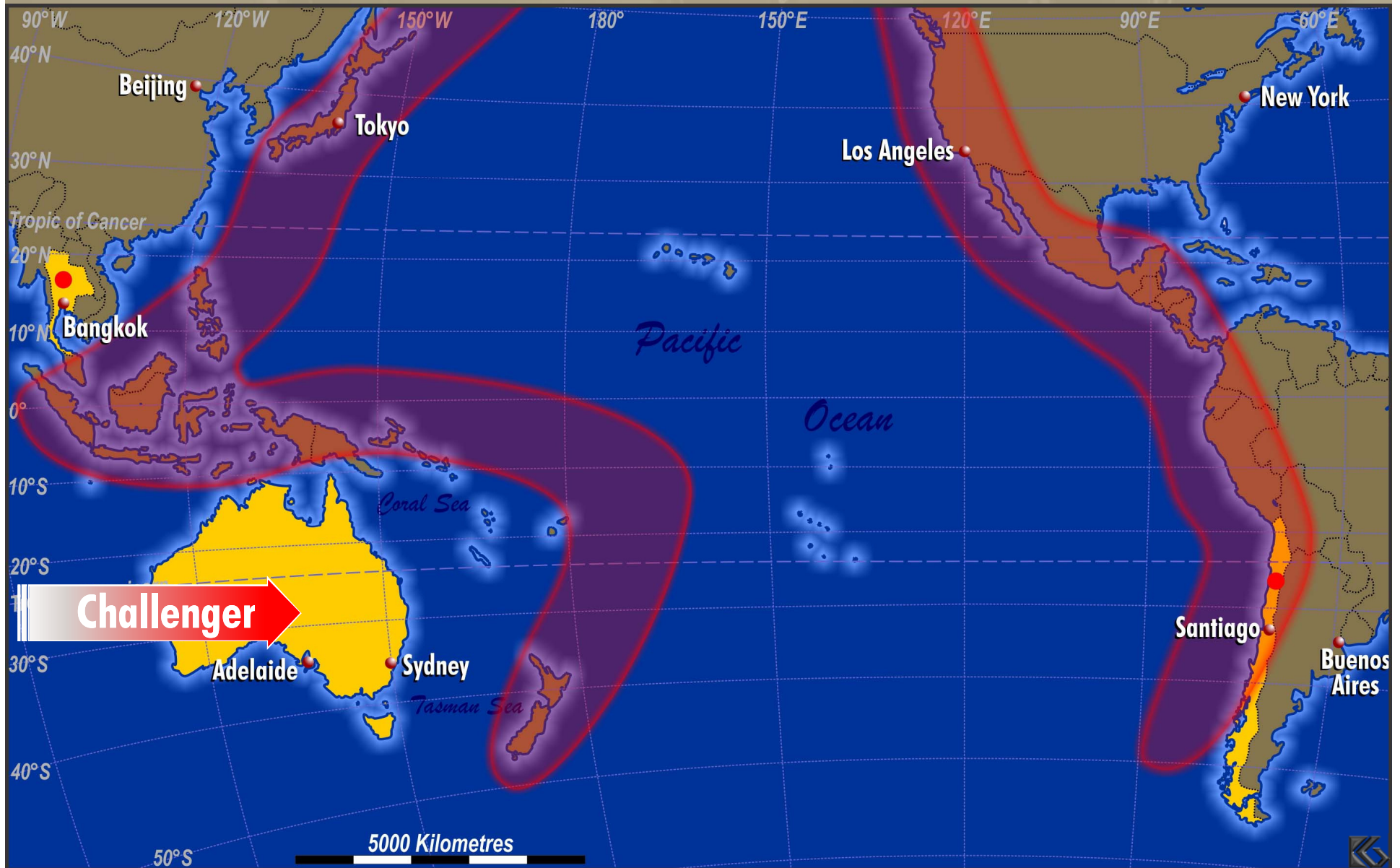
Precious Metals in the Pacific Rim

2011 – Two Mines and Two Advanced Projects



Challenger Gold Mine

Acquired by Kingsgate in Feb 2011



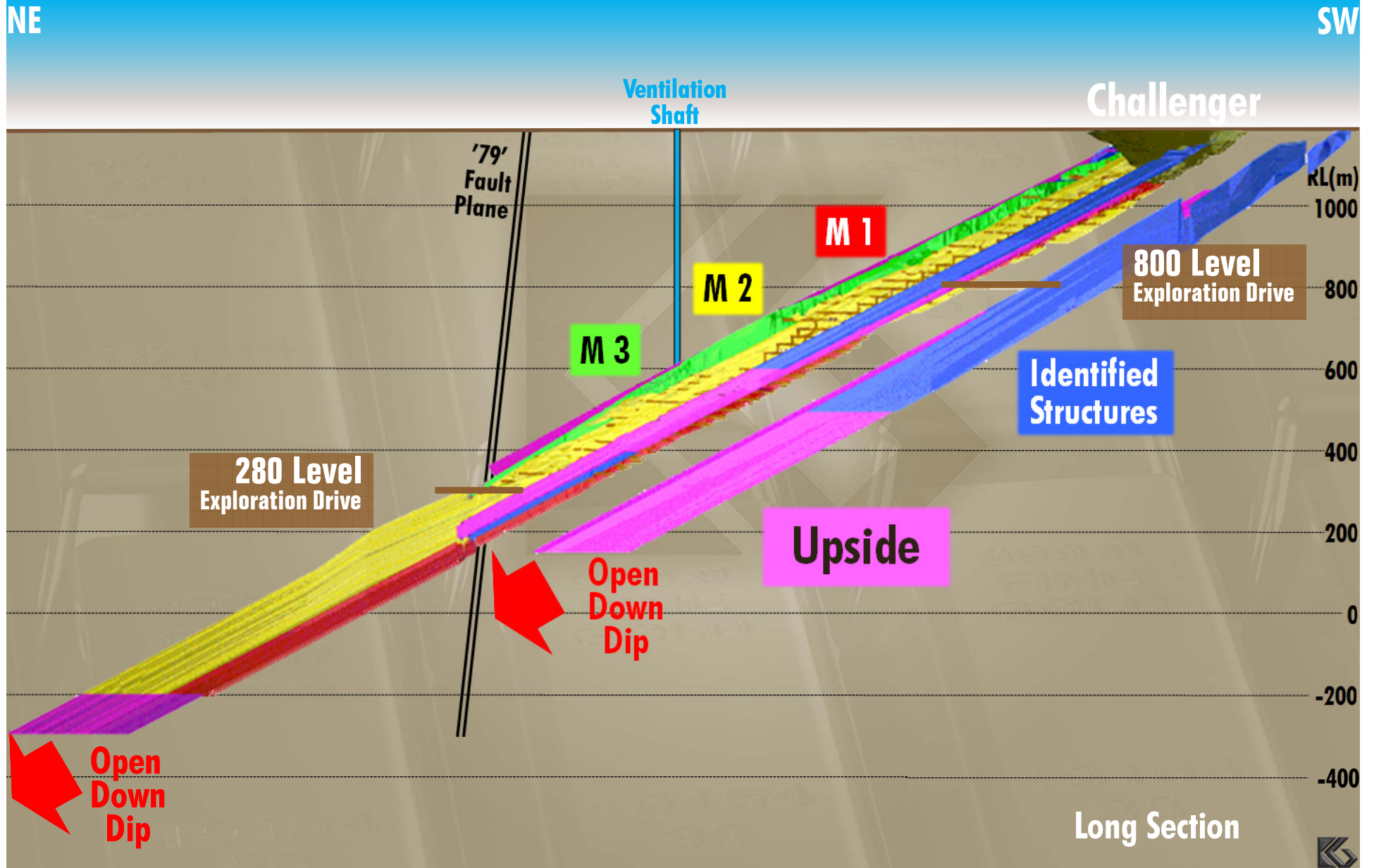
Challenger Gold Mine

Turn Around Story

- **Underground gold mine in remote South Australia .**
- **Production rate ~ 100koz pa to grow to ~ 120Kozpa over next 12 - 18mths**
- **Third quartile costs expected to improve in 2012**
- **Strong reserve growth anticipated. Current reserves ~420koz expected to increase substantially**
- **Resources ~950koz to grow significantly over next 2 to 5 years**

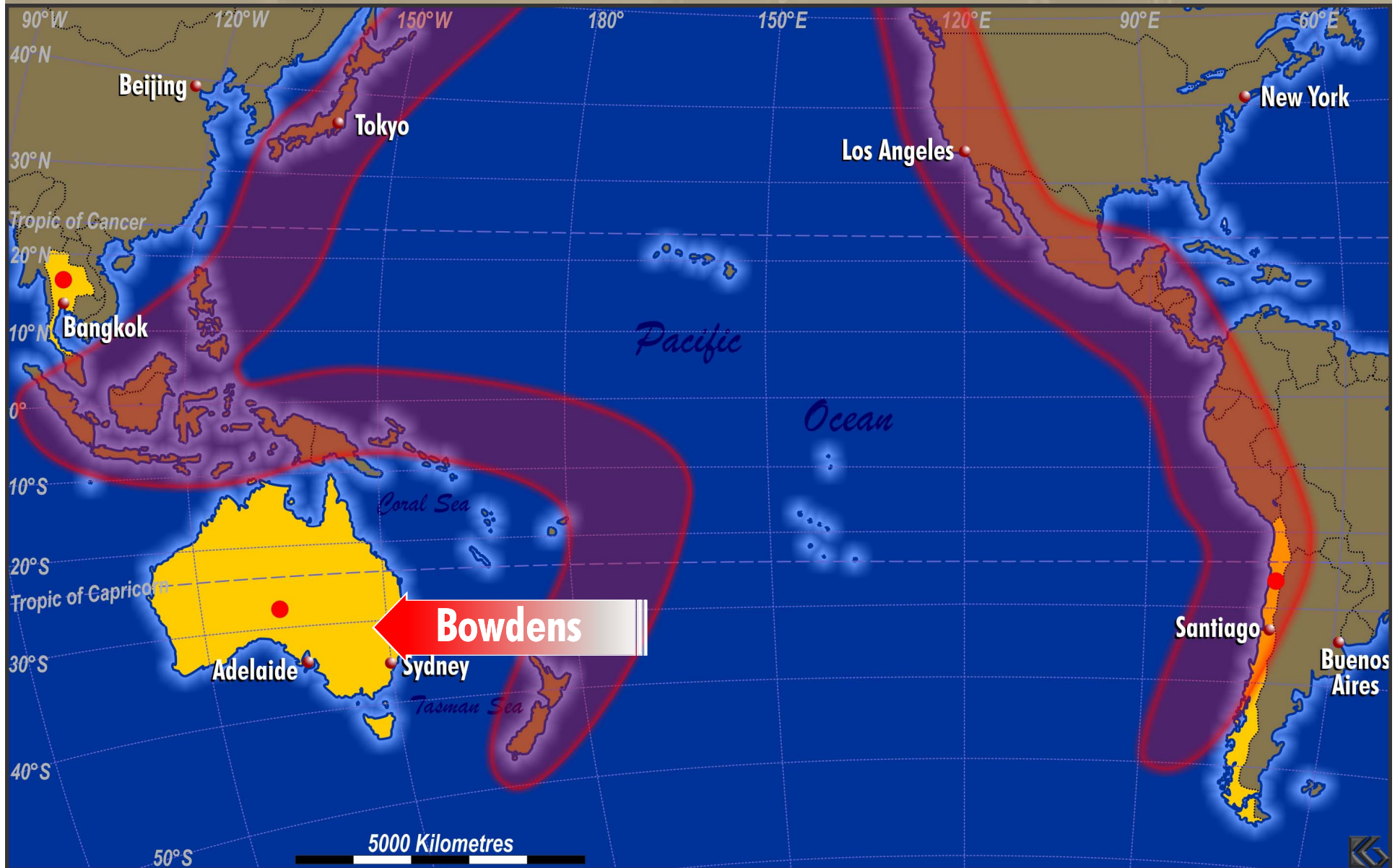


Challenger Mineralised Structures



Kingsgate Growth Project

Bowdens Silver project In NSW



Bowdens – “Buying Back the Farm”

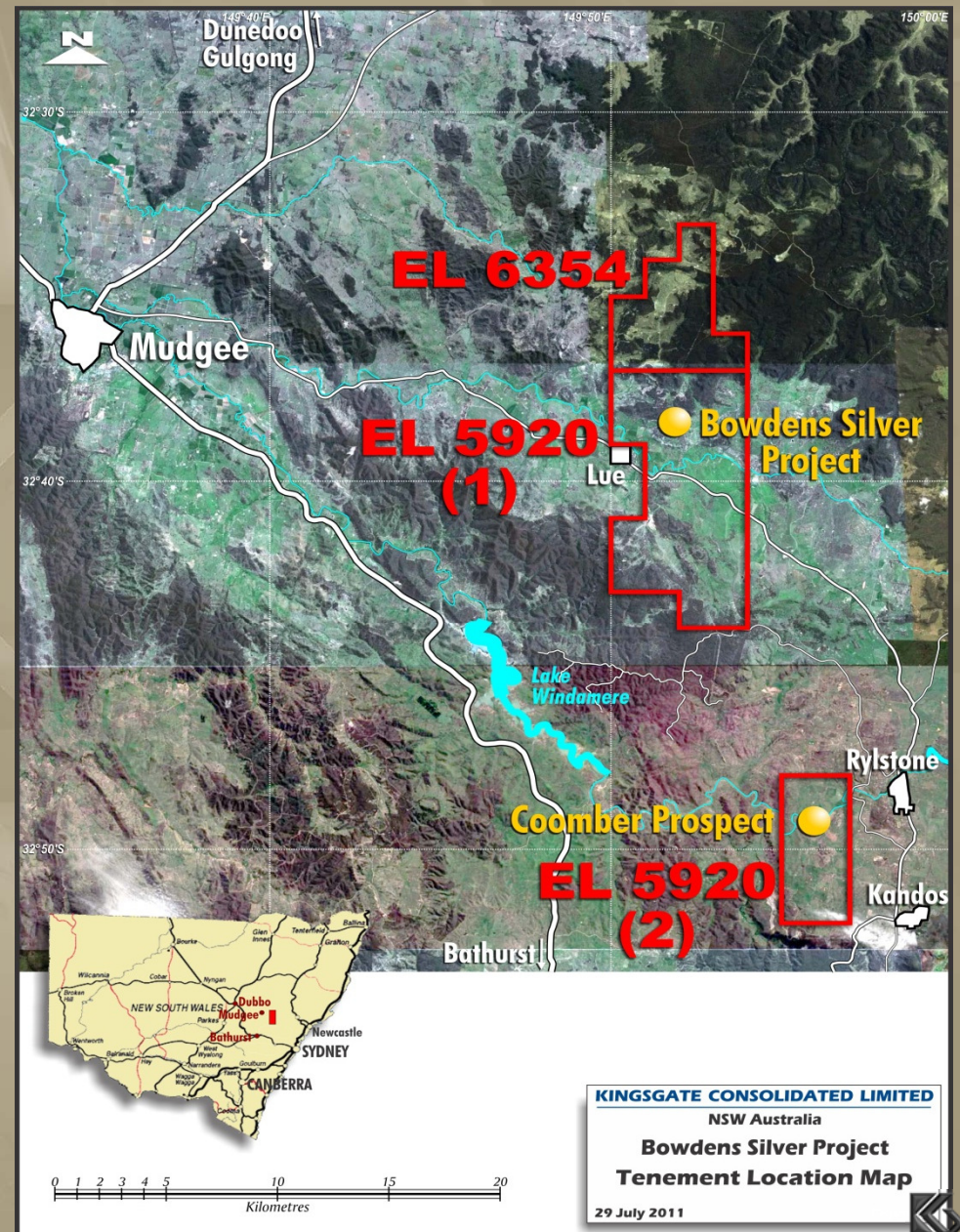
- **Silver resource of 97Moz Ag (130Moz AgEq) with strong upside potential (NI 43-101)**
- **In-ground value of ~\$5B, equal to +3Moz gold**
- **Purchased from Silver Standard for \$75M equals \$0.77/Ag Resource oz (\$0.58/Ag Eq Resource oz)**
- **Proceeding immediately to BFS, significant technical work previously completed**
- **Potential production by early 2014**
- **Mineralisation open at depth and along strike**

(All figures based on cut off grade of 40g/t AgEq)



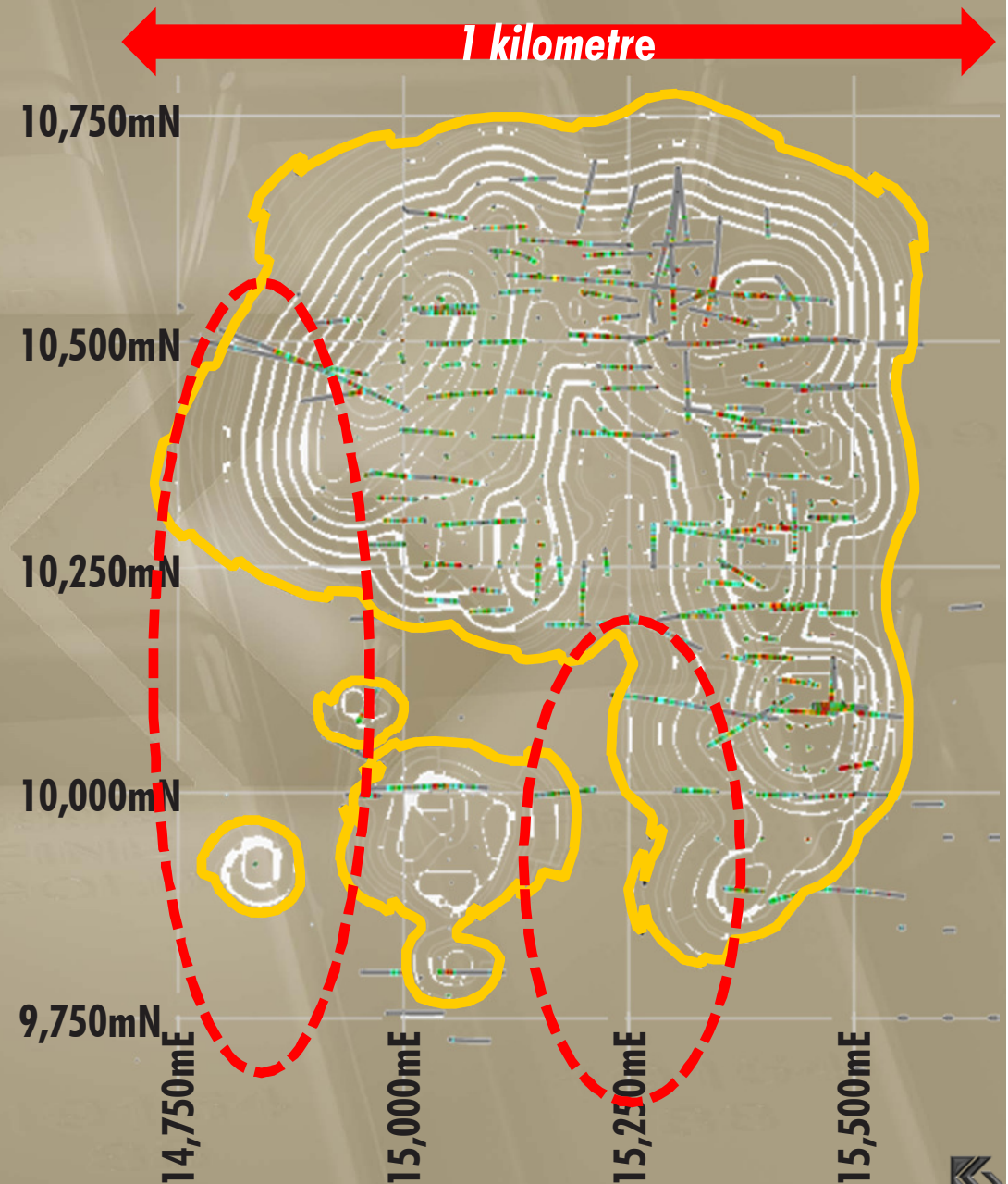
Bowdens Overview

- **Epithermal silver deposit with lead and zinc by-products**
- **Located 25km E of Mudgee, some 240km NW of Sydney**
- **Established infrastructure and mining workforce**
- **Large, continuous, near surface deposit hosted in a volcanic sequence of breccia and tuff (Rylstone Volcanics)**



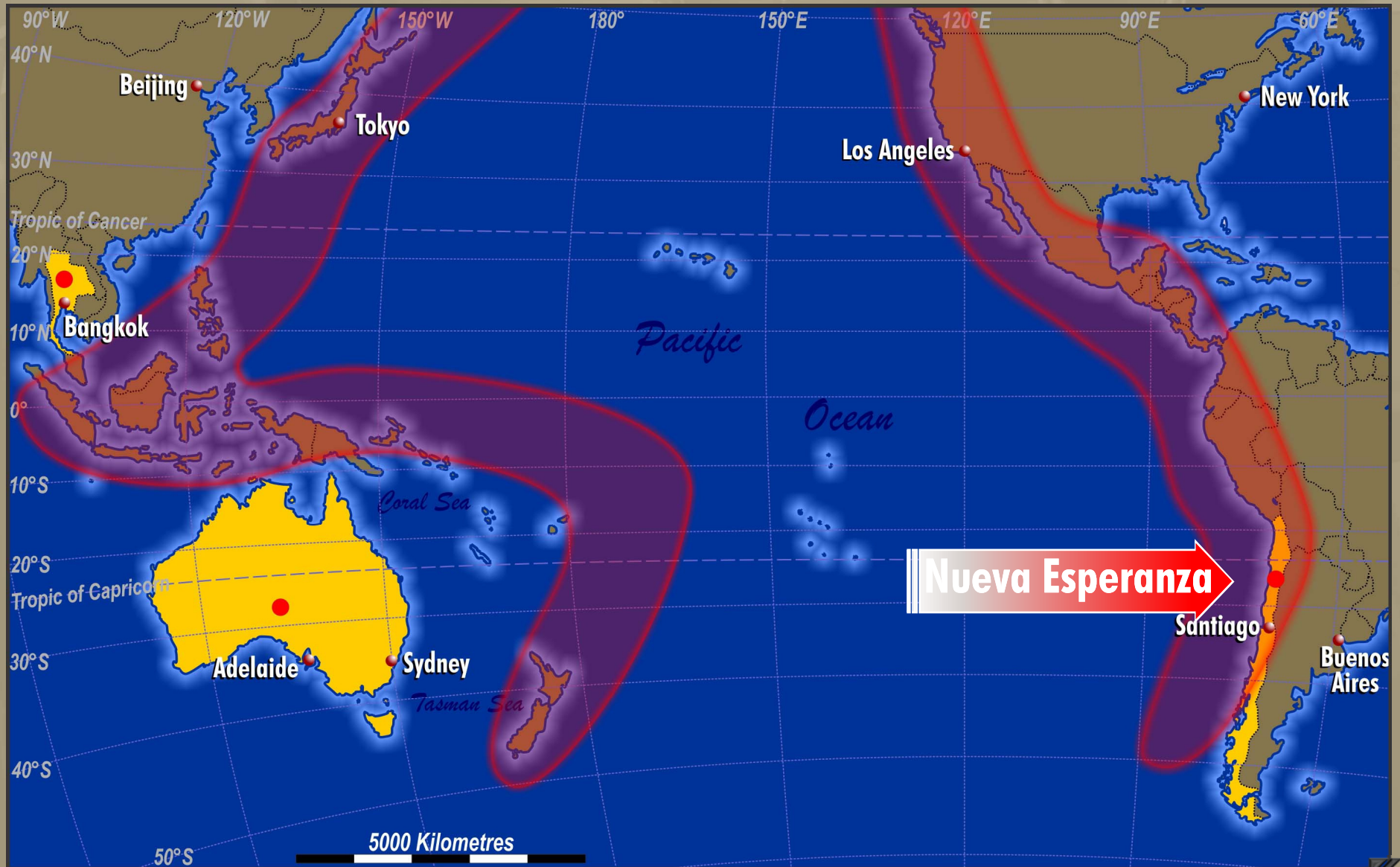
Exploration Upside

- **43,000m of drilling**
- **Most holes less than 100 metres deep**
- **Minor drilling on neighbouring freehold properties**
- **Obvious targets for drilling program**



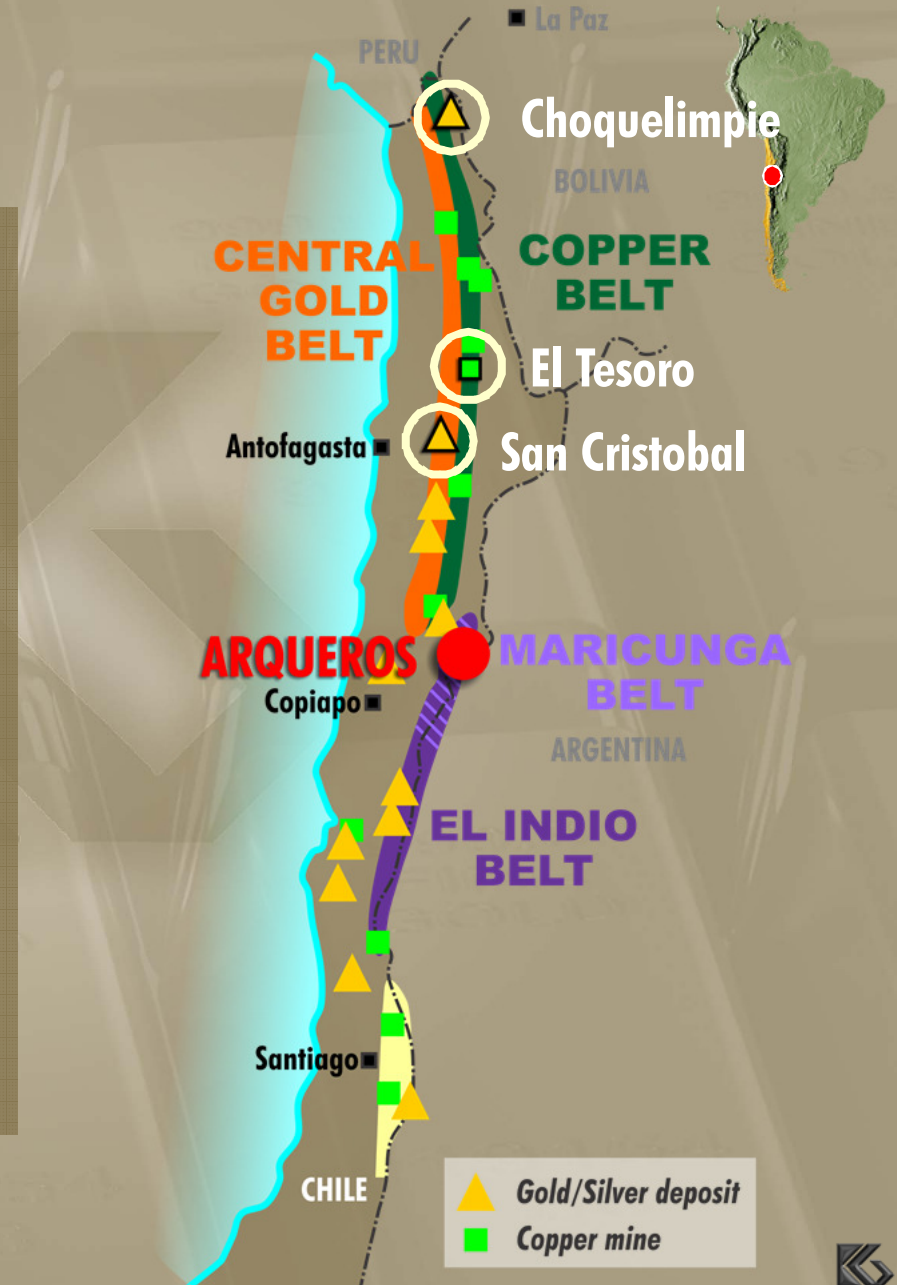
Nueva Esperanza

Advanced silver/gold project in Chile

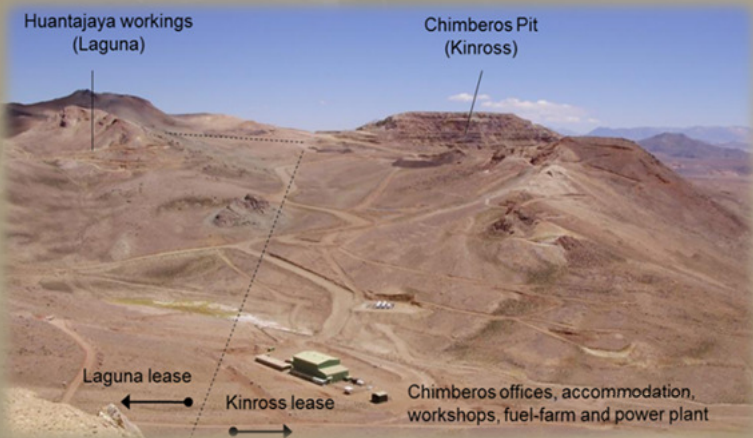


Project Well Located

- Acquired 70% of Laguna in Feb 11
- Kingsgate has substantial experience in the Chilean gold and copper belts
- Project located in the world-class Maricunga Gold-Silver Belt
- Maricunga Belt
 - Host to over 70Moz gold resources
 - Produced over 10Moz gold
 - Currently producing ~500Kozpa



Esperanza Enhances Arqueros



- Purchased Esperanza and Chimberos leases in July 11
- Adds ~20Moz of silver resources (~340koz gold EQ)
- Earlier plant commissioning and faster ramp-up with Teterita deposit



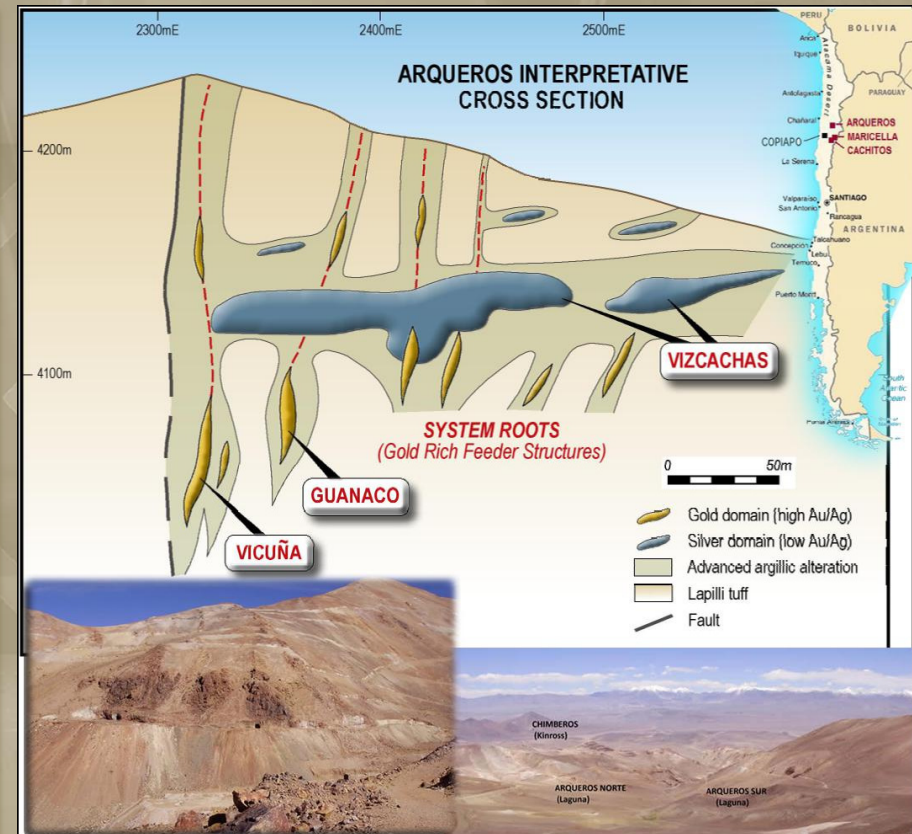
- Considerable surface rights and mine infrastructure
- Satellite mineralisation and increased exploration potential



Fast Track to Production

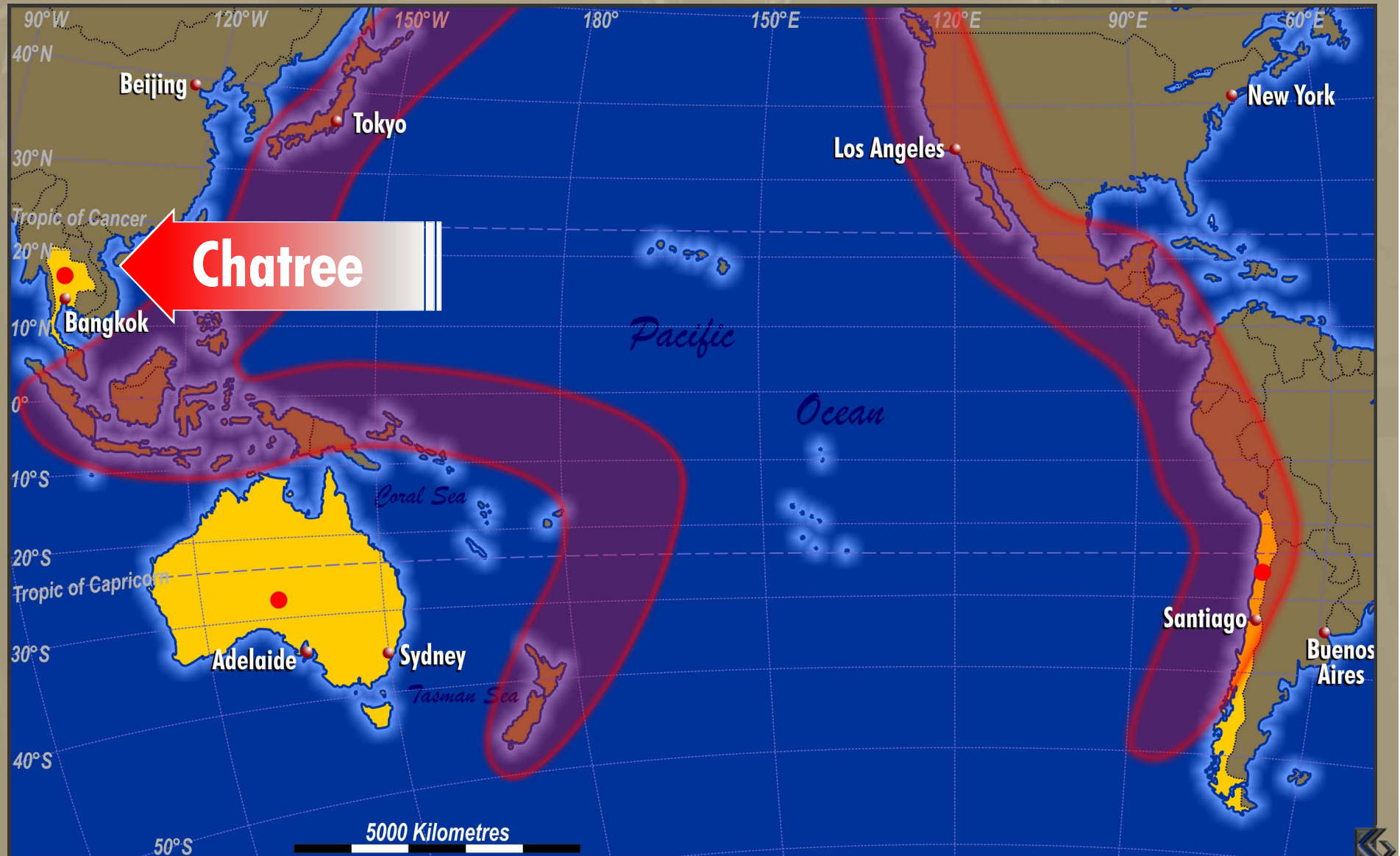
- 1.8 Million ounces gold EQ*
(80 Million ounces silver EQ)
- Average grade of $\sim 2.0\text{g/t}^*$ gold equivalent (cut-off: 0.5g/t g/e)
- Feasibility study in Q1 2012
- Construction 2012/13
- Annual output of 100,000 – 120,000oz* gold equivalent by open cut mine
- Proven management team

(* Calculated at AuEq 45)



Chatree Gold Mine in Thailand

Asian showcase gold mine



Thai Political Change



- Landmark victory by Puea Thai Party with 265 seats out of 500 seats
- Formed coalition to strengthen majority
- Led by Yingluck Shinawatra sister of former prime minister Thaksin Shinawatra
- Decisive victory should lead to a more politically stable Thailand
- Thai politics confined to Bangkok
- Chatree has not lost one day of production during six changes of Government and a military coup



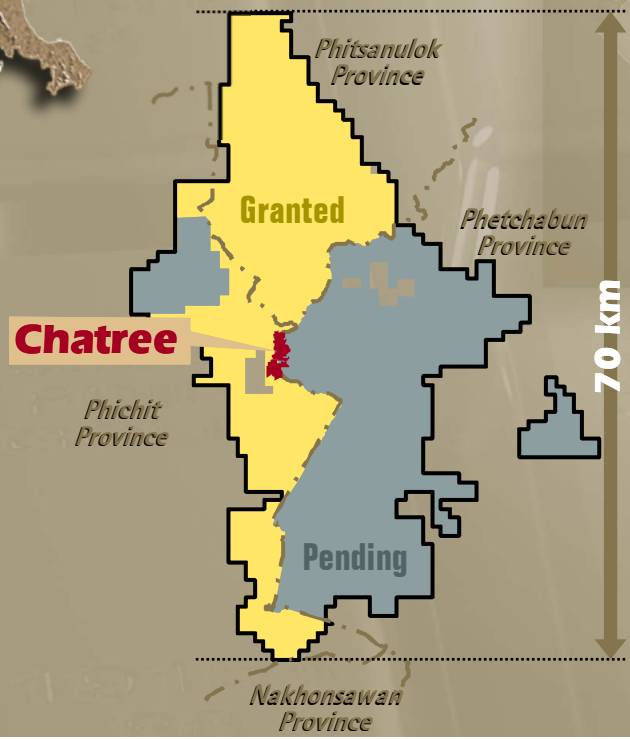
Chatree – Thai Gold Belt



World Class Gold Province

First Mover Advantage

**1,300 km² Tenement Package
Multiple Targets**



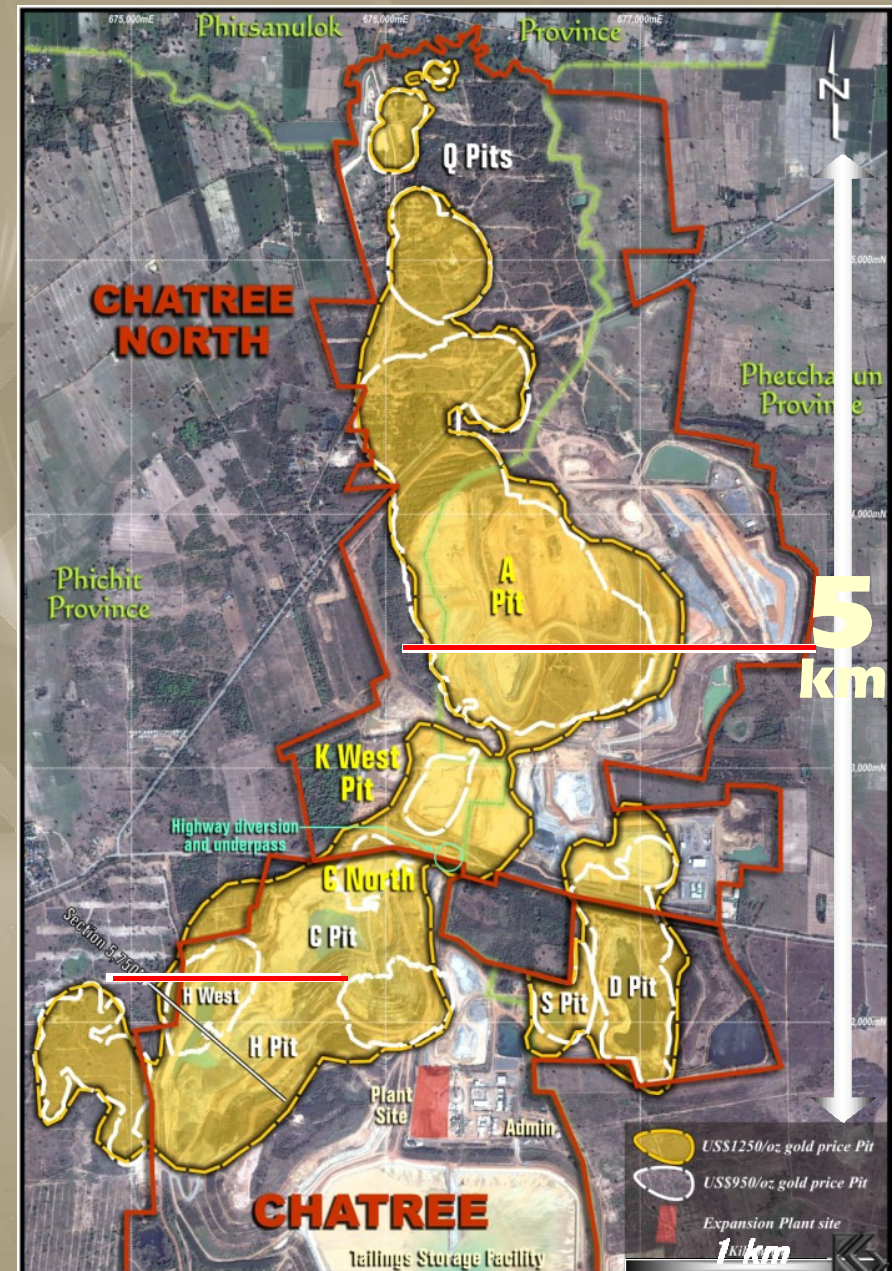
Chatree - World Class Deposit

**Chatree ~6Moz
to date & growing
(including mined to date)**

**Large low grade and
low cost gold deposit**

**1.9 Moz Reserve
4.3 Moz Resource***

(*As at 30 June 2010)



Chatree Expansion on Time

Chatree processing plant capacity increase from 2.3 to +5 Mtpa
Completion scheduled for end September 2011
Increase production rate up to 200,000 ounces per year



Total project capex US\$125M
Tax incentives granted for production from new plant

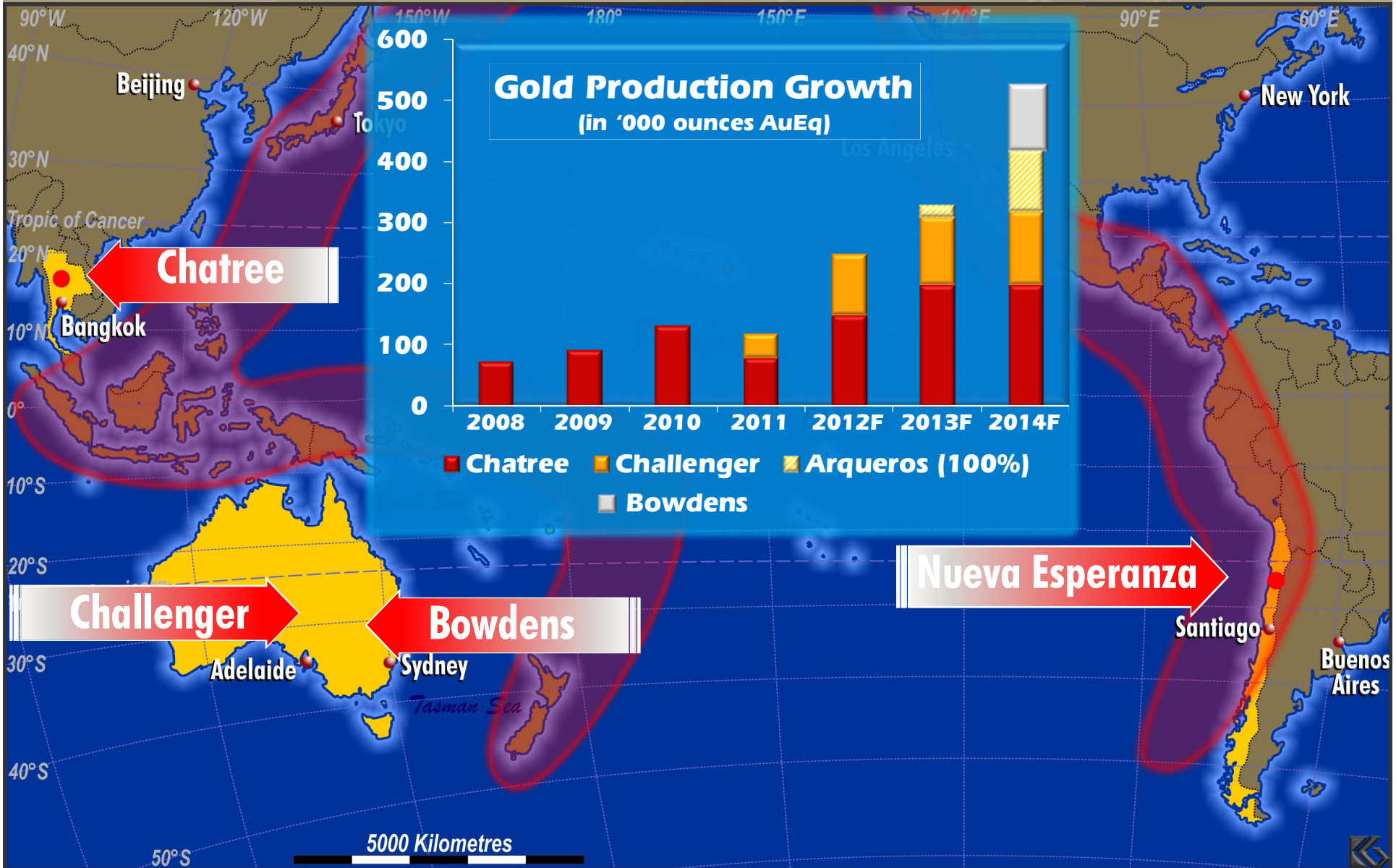


Chatree Expansion Under Budget

- Chatree North expansion on time and ~5% under US\$100M EPCM budget
- Despite
 - Heaviest wet season in a generation
 - Capital pressure on resource construction projects
- Established partnership in Asian development built up over a decade with Ausenco



Kingsgate to Deliver Strong Production Growth



Growing Mid-Tier Precious Metals Miner

-  **Diversified Production Growth**
-  **Resource Growth**
-  **Development Project Pipeline**
-  **Generating Strong Cashflow**
-  **Dividend Differential**



Kingsgate Consolidated Limited



Shares: 134 Million

Market Cap: ~A\$1.3Bn

ASX: KCN

www.kingsgate.com.au



Appendix

General Disclaimer:

The information contained in this presentation is for informational purposes only and does not constitute an offer to issue, or arrange to issue securities or other financial products. The information contained in this presentation is not investment or financial product advice and has been prepared without taking into account the investment objectives, financial situation or particular needs of any person. To the maximum extent permitted by law, none of Dominion Mining Limited, Kingsgate Consolidated Limited, their respective directors, employees or agents, nor any other person accepts any liability including without limitation any liability arising out of fault or negligence for any loss caused from the use of the information contained in this presentation. No representation or warranty, express or implied, is given as to the accuracy, completeness or correctness, likelihood of achievement or reasonableness of any forecasts or other forward looking statements.

Competent Persons Statements:

Information in this presentation that relates to Kingsgate's Exploration Results, Mineral Resource and Ore Reserve estimates, geology, drilling and mineralisation, is based on information compiled by Ron James, who is an employee of the Kingsgate Group and is a member of The Australasian Institute of Mining and Metallurgy. Ron James is a Competent Person under the meaning of the JORC Code with respect to Exploration Results, Mineral Resource and Ore Reserve estimates, geology, drilling and mineralisation being presented. He has given his consent to the Public Reporting of these statements concerning Exploration Results, Mineral Resource and Ore Reserve estimates, geology, drilling and mineralisation, and is in agreement with the contents and format of this presentation.

The information in this presentation that relates to Challenger's Exploration Results, Mineral Resources or Ore Reserves is based on information compiled by Peter Bamford, Tony Poustie and Paul Androvic who are full-time employees of the Company, members of the Australasian Institute of Mining and Metallurgy. Peter Bamford, Tony Poustie and Paul Androvic have sufficient experience, which is relevant to the style of mineralisation and type of deposit under consideration and to the activity, which they are undertaking to qualify as Competent Persons as defined in the 2004 Edition of the 'Australasian Code for Reporting of Exploration Results, Mineral Resources and Ore Reserves'. Peter Bamford, Tony Poustie and Paul Androvic, consent to the inclusion in the report of the matters based on their information in the form and context in which it appears.



Chatree

Chatree Ore Reserves as at 30 June 2010 (>0.4g/t gold cut-off grade)

Source	Category	Tonnes	Gold Grade	Silver Grade	Gold Contained	Silver Contained
		(millions)	(g/t)	(g/t)	(Moz)	(Moz)
From Pits	Proved	37.4	1.00	9.5	1.20	11.42
	Probable	18.7	0.98	8.4	0.59	5.02
Stockpiles		5.60	0.79	12.1	0.14	2.19
Chatree Total	Total	61.7	0.97	9.4	1.93	18.63

Chatree Mineral Resources as at 30 June 2010 (>0.3g/t gold cut-off grade)

Source	Category	Tonnes	Gold Grade	Silver Grade	Gold Contained	Silver Contained
		(millions)	(g/t)	(g/t)	(Moz)	(Moz)
From Pits	Measured	79.8	0.81	7.4	2.07	18.85
	Indicated	56.7	0.76	6.1	1.39	11.07
	Inferred	31.4	0.71	4.8	0.72	4.86
Stockpiles		5.60	0.79	12.1	0.14	2.19
Chatree Total	Total	173.5	0.77	6.6	4.32	36.97

Competent Persons Statement. Information in this presentation relates to Exploration Results, Mineral Resource and Ore Reserve estimates based on information compiled by the following Competent Persons: Ron James, Fiona Davidson, Guy Davies and Suphanit Suphananthi who are employees of the Kingsgate Group and members of The Australasian Institute of Mining and Metallurgy and Rob Spiers who is an employee of Hellman & Schofield Pty Ltd and member of The Australian Institute of Geoscientists. These people qualify as Competent Persons as defined in the Australasian Code for Reporting of Exploration Results, Mineral Resources and Ore Reserves (the JORC Code, 2004 edition) and possess relevant experience in relation to the mineralisation being reported herein as Exploration Results, Mineral Resources and Ore Reserves. Each Competent Person has consented to the Public Reporting of these statements and the inclusion of the material in the form and context in which it appears.



Challenger

Challenger Ore Reserves as at 30 June 2010

Source	Category	Tonnes	Gold Grade	Gold Contained
		('000)	(g/t)	('000 oz)
From Mine	Proved	318	5.8	59
	Probable	1,834	6.0	352
Stockpiles		157	2.1	9
Challenger Total	Total	2,310	5.7	420

Challenger Mineral Resources as at 30 June 2010

Source	Category	Tonnes	Gold Grade	Silver Contained
		('000)	(g/t)	('000 oz)
From Mine	Measured	310	6.3	63
	Indicated	2,232	6.4	460
	Inferred	1,672	7.8	418
Stockpiles		157	1.8	8
Challenger Total	Total	4,371	6.8	950

Competent Persons Statement. The information in this presentation that relates to Exploration Results, Mineral Resources or Ore Reserves is based on information compiled by Peter Bamford, Tony Poustie and Paul Androvic who are full-time employees of the Company, members of The Australasian Institute of Mining and Metallurgy. Peter Bamford, Tony Poustie and Paul Androvic have sufficient experience, which is relevant to the style of mineralisation and type of deposit under consideration and to the activity which they are undertaking, to qualify as Competent Persons as defined in the 2004 Edition of the 'Australasian Code for Reporting of Exploration Results, Mineral Resources and Ore Reserves'. Peter Bamford, Tony Poustie and Paul Androvic consent to the inclusion in the report of the matters based on their information in the form and context in which it appears.



Arqueros

Tonnes & grade	INDICATED				INFERRED				TOTAL				Koz AuEQ
	Mt	Au g/t	Ag g/t	AuE Q	Mt	Au g/t	Ag g/t	AuEQ	Mt	Au g/t	Ag g/t	AuEQ	
Arqueros	16.0	0.32	81	2.12	4.0	0.3	50	1.4	20.0	0.32	75	1.98	1,272
Chimberos					3.7	0.2	85	2.1	3.7	0.2	85	2.1	248
Teterita					4.8	-	85	1.9	4.8	-	85	1.9	293
Combined	16.0	0.32	81	2.12	12.5	0.2	74	1.8	28.5	0.25	78	1.98	1,814

Gold equivalent ounces @ 0.5 g/t AuEQ	INDICATED				INFERRED				TOTAL				Proportion Indicated Resource
	Au koz	Ag Moz	AuEQ koz	AuEQ g/t	Au koz	Ag Moz	AuEQ koz	AuEQ g/t	Au koz	Ag Moz	AuEQ koz	AuEQ g/t	
Arqueros	165	41.7	1,091	2.12	39	6.4	181	1.4	203	48.1	1,272	1.98	86%
Chimberos					24	10.1	248	2.1	24	10.1	248	2.1	-
Teterita					-	13.2	293	1.9	-	13.2	293	1.9	-
Combined	165	41.7	1,091	2.12	64	29.7	723	1.80	229	71.3	1,814	1.98	60%

Silver equiv. ounces @ 0.5 g/t AuEQ	INDICATED				INFERRED				TOTAL				Proportion Indicated Resource
	Au koz	Ag Moz	AgEQ Moz	AgEQ g/t	Au koz	Ag Moz	AgEQ Moz	AgEQ g/t	Au koz	Ag Moz	AgEQ Moz	AgEQ g/t	
Arqueros	165	41.7	49.1	95	39	6.4	8.2	64	203	48.1	57.2	89	86%
Chimberos					24	10.1	11.2	94	24	10.1	11.2	94	-
Teterita					-	13.2	13.2	85	-	13.2	13.2	85	-
Combined	165	41.7			64	29.7	32.5	81	229	71.3	81.6	89	60%

Notes: Gold & silver equivalence ratio set at 45; bulk density 2.0

Competent Persons Statement. Dr Nicholas Lindsay is a Member of the Australian Institute of Mining and Metallurgy and has sufficient experience which is relevant to the style of mineralisation and type of deposit under consideration and to the activity which he is undertaking to qualify as a Competent Person as defined in the 2004 Edition of the 'Australian Code for Reporting of Exploration Results, Mineral Resources and Ore Reserves'. Dr Lindsay is the Managing Director of Laguna Resources NL and consents to the inclusion in this release of the matters based on his information and information presented to him in the form and context in which it appears.

The Mineral Resource at Arqueros has been estimated by Mr P Ball (Director of DataGeo Geological Consultants) from information provided by Laguna Resources NL and its agents. Mr Ball is a member of the Australian Institute of Mining and Metallurgy and has sufficient experience relevant to the style of mineralisation under consideration to qualify as a competent person as defined in the 2004 edition of the "Australian Code for Reporting of exploration results, mineral resources and ore reserves". Mr Ball consents to the inclusion to the mineral resource estimate in the form and context in which it appears based on the information presented to him.

Bowdens

- Bowdens has existing NI 43-101 resource
- Measured, Indicated & Inferred = 97Moz Ag (40 g/t Ag equivalent cut-off)
- M, I & I = 130Moz AgEq (40 g/t Ag equiv cut-off)
- JORC-compliant resource expected in next 2 months

Class Ag Eq cut	Cut-off (AgEq g/t)	Tonnes (t)	Grade			
			Ag g/t	Pb %	Zn %	AgEq g/t
Measured	40	22.9	50.41	0.33	0.46	71.43
Indicated	40	24.7	53.33	0.26	0.36	68.45
Measured & Indicated	40	47.6	51.93	0.30	0.41	69.88

Class Ag Eq cut	Cut-off (AgEq g/t)	Tonnes (t)	Grade			
			Ag g/t	Pb %	Zn %	AgEq g/t
Inferred	40	13.4	40.94	0.21	0.32	54.49

