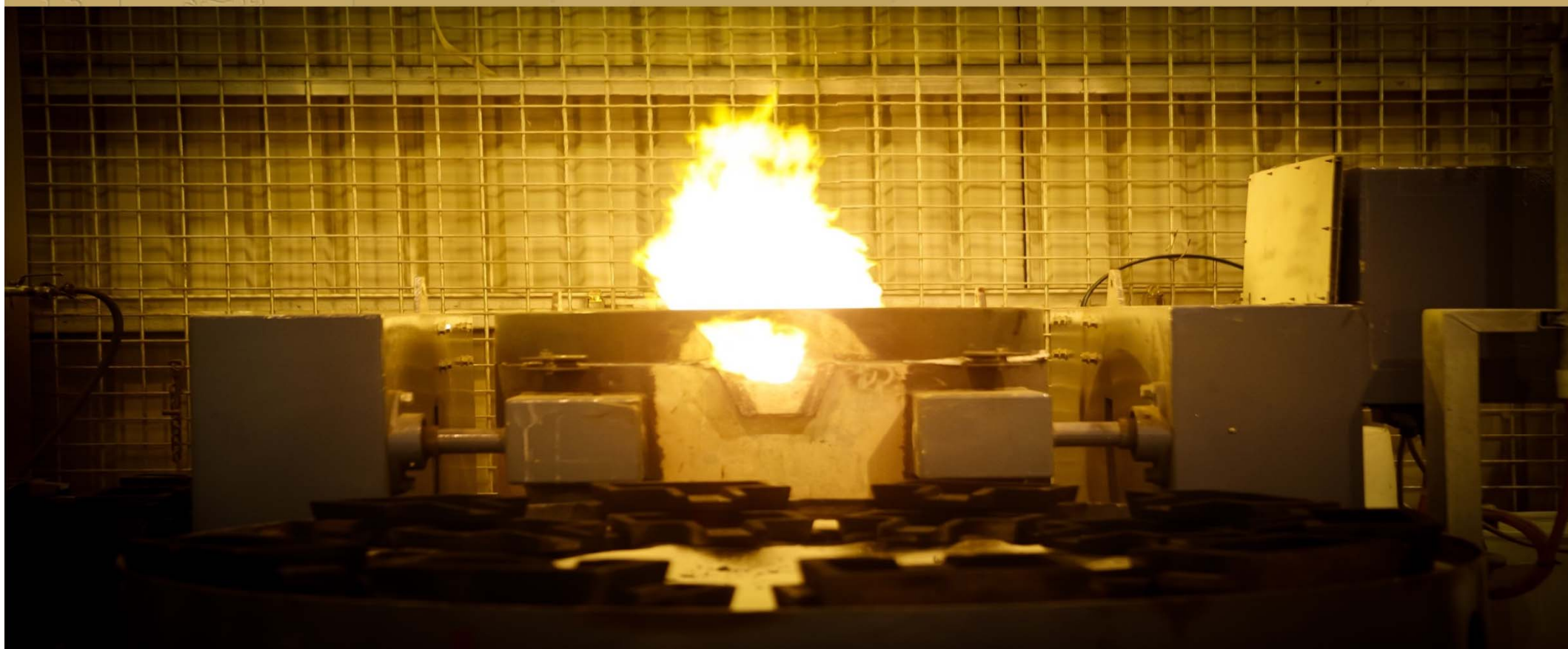




Kingsgate Consolidated Limited

June 2014

Quarterly Report



Disclaimer

Forward Looking Statements:

These materials include forward looking statements. Forward looking statements inherently involve subjective judgment & analysis & are subject to significant uncertainties, risks & contingencies, many of which are outside of the control of, & may be unknown to, the company.

Actual results and developments may vary materially from that expressed in these materials. The types of uncertainties which are relevant to the company may include, but are not limited to, commodity prices, political uncertainty, changes to the regulatory framework which applies to the business of the company & general economic conditions. Given these uncertainties, readers are cautioned not to place undue reliance on such forward looking statements.

Forward looking statements in these materials speak only at the date of issue. Subject to any continuing obligations under applicable law or any relevant stock exchange listing rules, the company undertakes any obligation to publicly update or revise any of the forward looking statements, changes in events, conditions or circumstances on which any such statement is based.

Some statements in this presentation regarding estimates or future events are forward looking statements. They involve risk and uncertainties that could cause actual results to differ from estimated results. Forward looking statements include estimates of future production, cash and total costs per ounce of production, reserve and mineralized material estimates, capital costs, and other estimates or prediction of future activities. They include statements preceded by words such as “believe,” “estimate,” “expect,” “intend,” “will,” and similar expressions. Actual results could differ materially depending on such things as political events, labour relations, currency fluctuations and other general economic conditions, market prices for Kingsgate Consolidated Limited products, timing of permits and other government approvals and requirements, changes in operating conditions, lower than expected ore grades, unexpected ground and mining conditions, availability and cost of materials and equipment, and risks generally inherent in the ownership and operation of mining properties and investment in foreign countries.

March Quarter - Highlights

- **Strong Group operating performance with quarterly gold production 55,450oz at total cash cost of US\$857/oz**
- **Record annual gold production of 209,500oz, at the top-end of the guidance range of 190,000oz to 210,000oz**
- **Chatree produced 36,475oz of gold at US\$631/oz and Challenger produced 18,975oz at US\$1,291/oz.**
- **Retail component of capital raising completed in mid-April with funds received of A\$30.9M (gross).**
- **Mine plan optimisation and additional testwork underway to support the positive Nueva Esperanza DFS.**
- **Encouraging gold exploration results at Sayabouly in Lao PDR with 5.0m @ 6.7g/t gold and 4.0m @ 6.7g/t gold in trenching.**
- **Geoff Day appointed CEO and will join Kingsgate in Sept Qtr.**

All-in Sustaining Cost

		Chatree	Challenger	Group
Gold Sales	oz	40,686	19,375	60,062
Adjusted Total Cash Costs (incl royalties and bi-product)	US\$/oz	672	1,266	864
Sustaining Capex	US\$/oz	124	7	86
Exploration Expense	US\$/oz	-	-	-
Corporate and Admin Costs ^	US\$/oz	-	-	76
All-in Sustaining Cost (June Qtr)	US\$/oz	796	1,273	1,026
All-in Sustaining Cost (March Qtr)	US\$/oz	923	1,355	1,126

Based on gold sales in the June Qtr 2014

* Includes underground mine development.

^ Corporate and Admin costs have been allocated 73% : 27 % between operating assets and development projects.



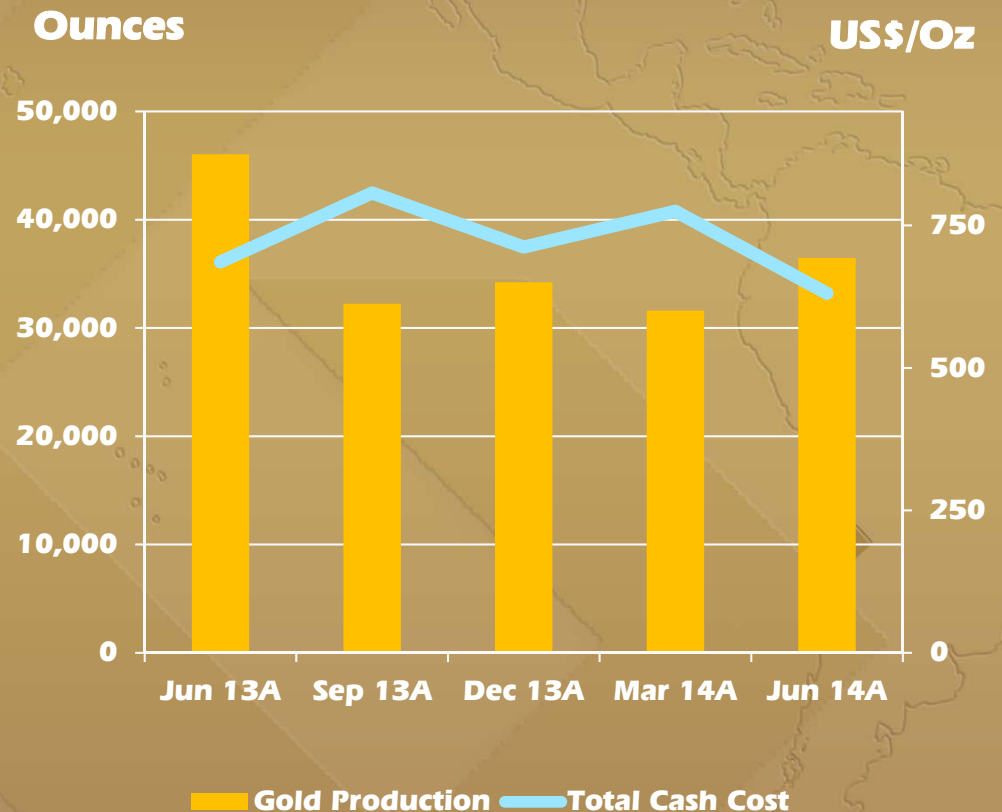
Chatree

Strong June Quarter

June Quarter 2014

- **Gold production 36,475oz**
- **1,599kt @ 0.90g/t & 79.5%**
(1,556kt @ 0.81g/t & 77.7%)
 - **Grade reflects access to high grade areas in A Pit Stage 2.**
 - **Recovery in-line with LOM of 80.5%**
- **Total cash costs US\$631**
(incl.US\$ 120/oz royalty)
- **Annual production of 134,546oz**
 - **Strong final quarter delivered above upper guidance of 130,000oz**
- **Full year guidance for FY2015**
 - **130,000oz to 140,000oz**

Chatree Quarterly Gold Production

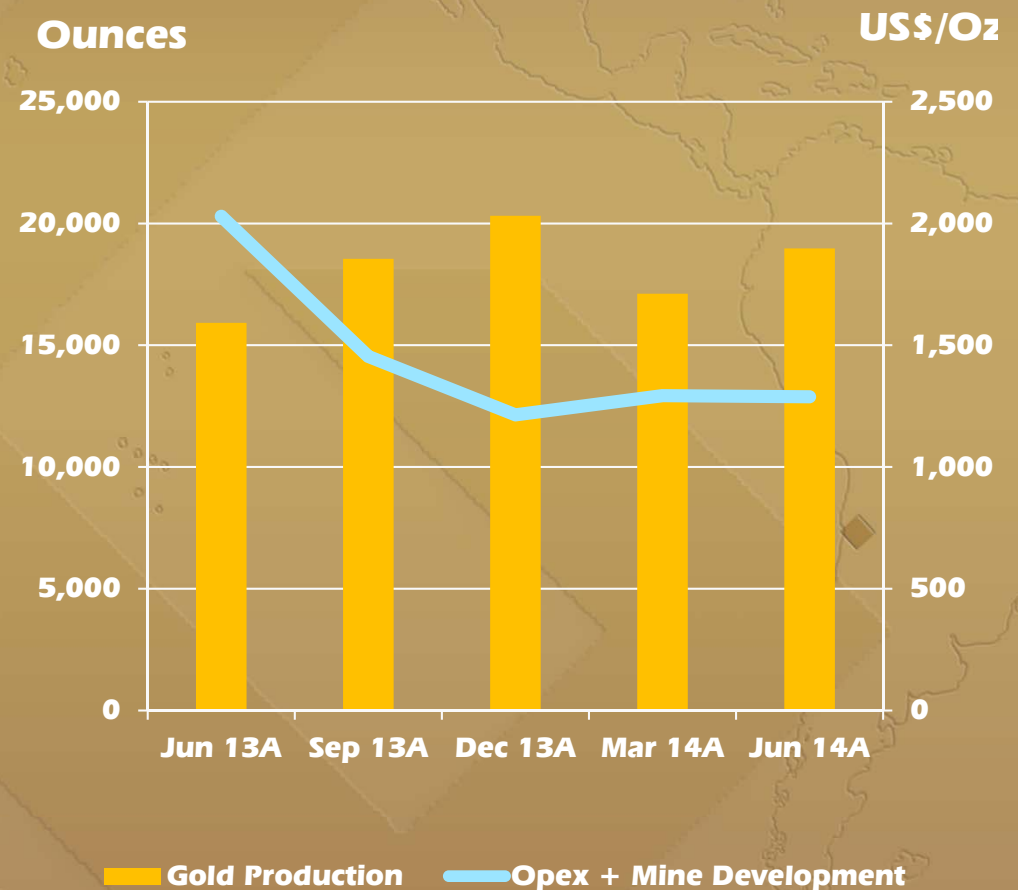


Challenger

June Quarter 2014

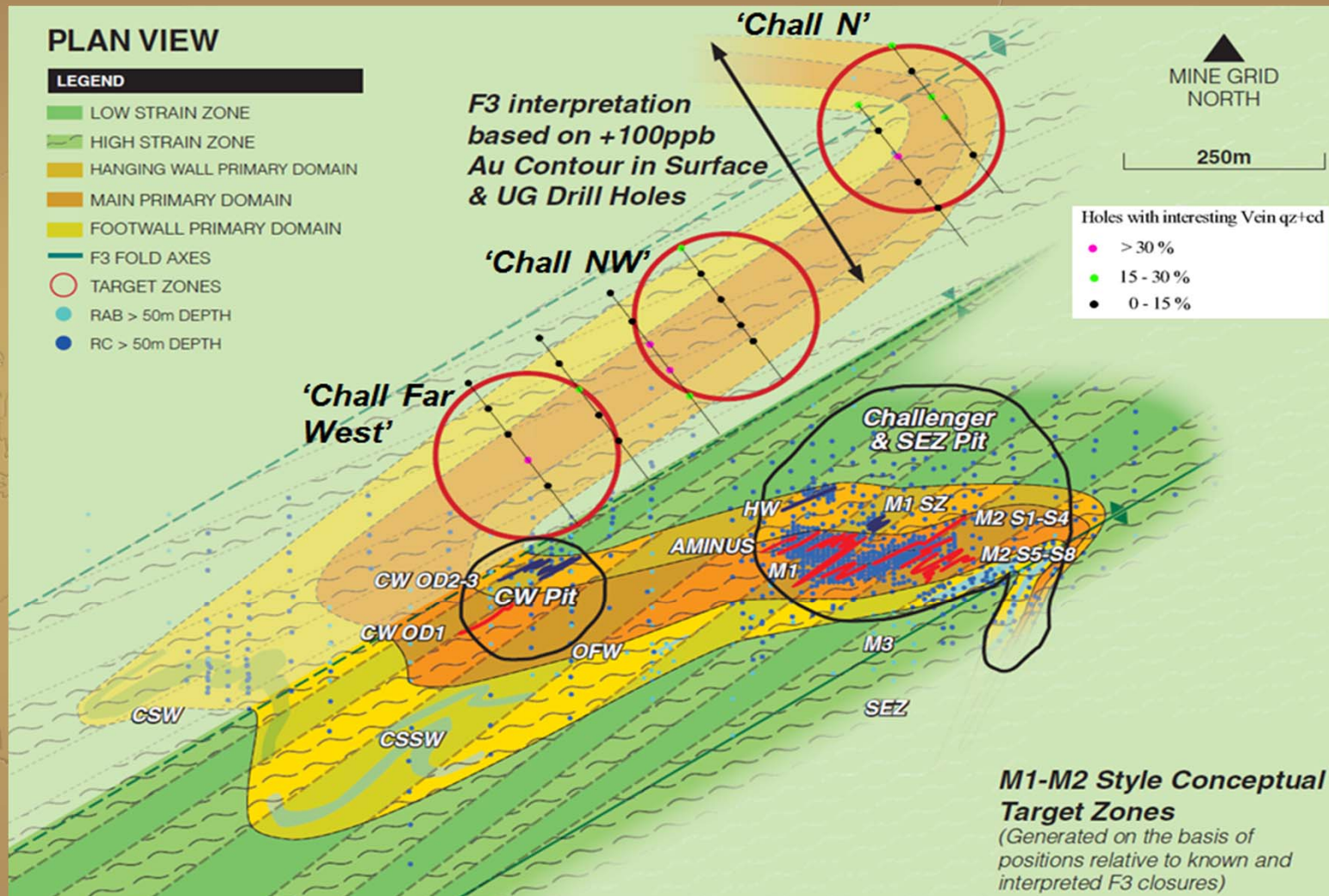
- **Gold production 18,975oz**
- **126Kt @ 4.80g/t & 96.8%**
(110Kt @ 5.05g/t & 96.1%)
 - **Localised dilution delivering lower grade**
- **Total operating costs US\$ 1,291**
(incl.US\$50/oz royalty)
 - **Costs include mine development expenditure**
- **Annual production of 74,954oz**
- **Full year guidance for FY2015**
 - **65,000oz to 75,000oz**

Challenger Quarterly Gold Production and "All-In" Costs



Challenger Exploration

Challenger Matrix Lode



Drillhole locations with preliminary logging results

- Awaiting full assay results

Nueva Esperanza

Development schedule

Project Schedule

- **DFS completed with positive results**
- **Addendum (DIA) to approved EIA lodged**
- **DIA approval expected within 6 months**

Current Work Program

- **Optimisation studies for mining, metallurgy and infrastructure**
- **Exploration drilling of high grade gold targets at Chimberos and satellite prospects**

Nueva Esperanza Upside

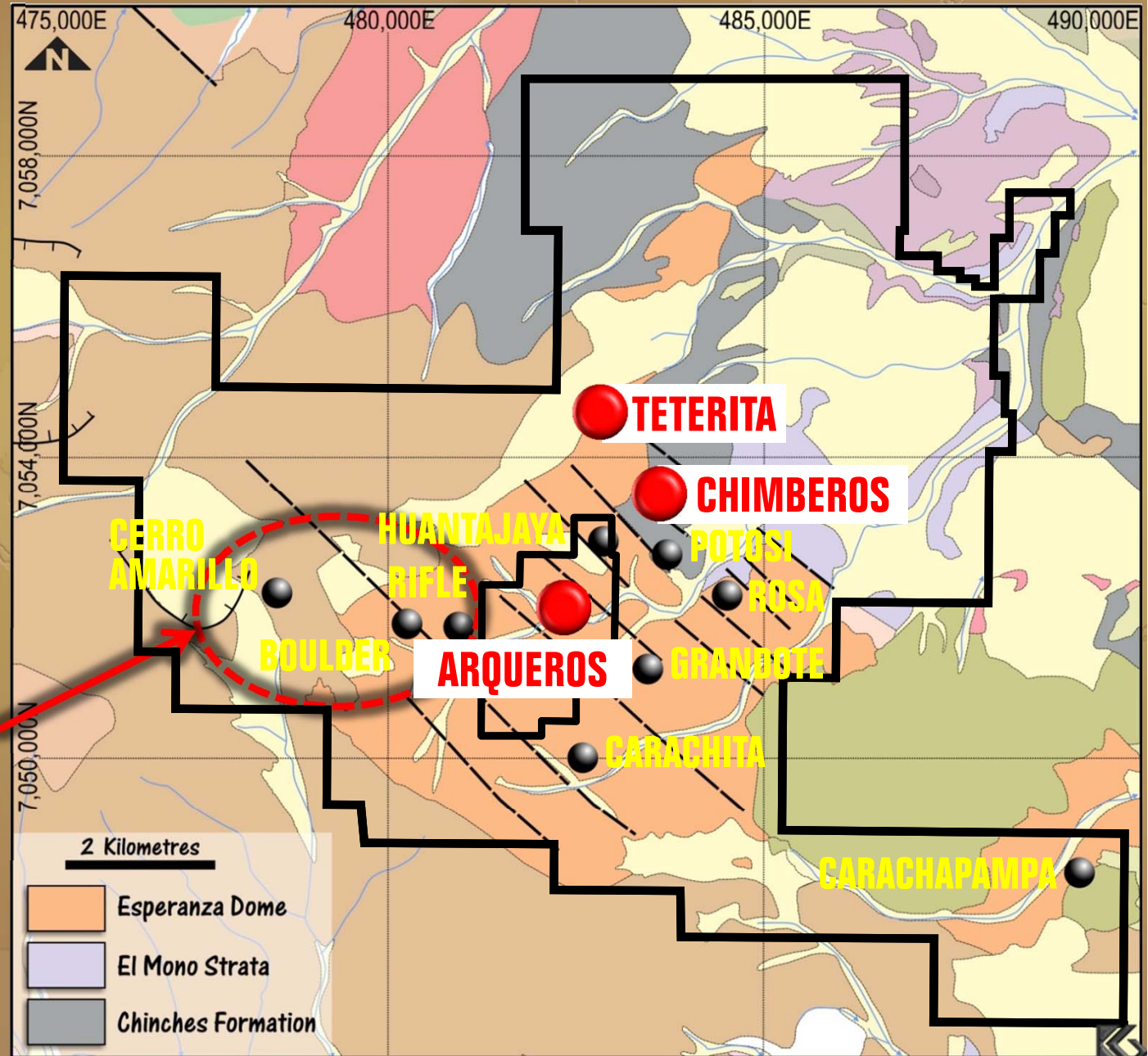
Highly prospective regional exploration

Extensive hydrothermal alteration footprint

Three established resources

Multiple highly prospective targets

Exploration drilling to focus historic high grade gold intercepts



Bowdens

Project timing to reflect market conditions

Feasibility Study

- Major elements of the DFS largely completed.
- Power and water options identified but not yet finalised

Environmental Impact Statement

- Environmental monitoring and on-going field data recording
- EIS work anticipated to be completed and submitted by end calendar 2014

Regional Exploration

Encouraging results at Sayabouly in Lao PDR

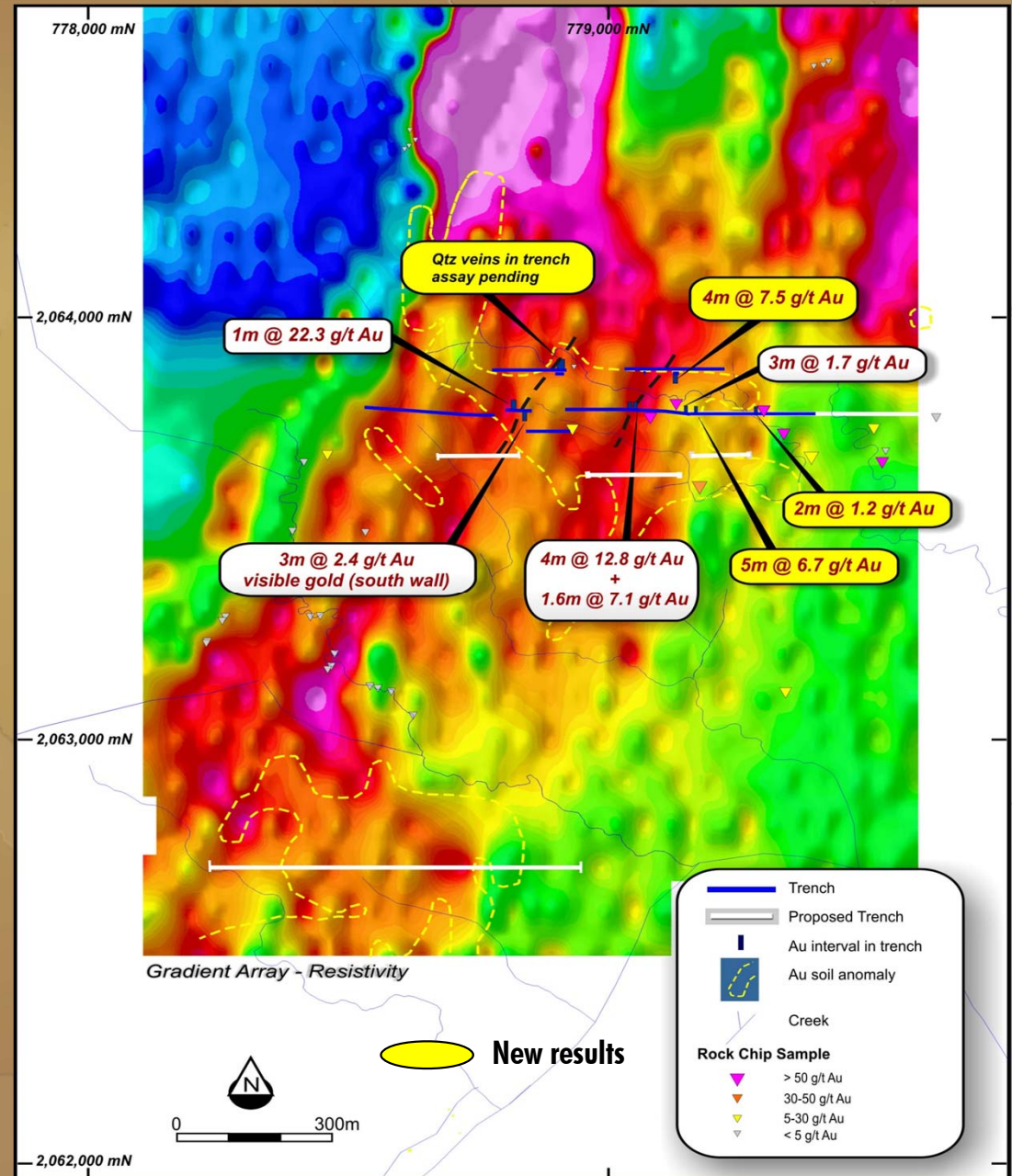
High grade quartz veins extended in follow-up trenching.

New channel sample results include:

- 5m @ 6.7g/t gold
- 4m @ 7.5g/t gold

Zones of quartz-sulphide coincide with IP anomalies

Further trenching later in the year as a pre-cursor to drilling



Balance Sheet

- **Cash and bullion/dore of A\$74.2M at 30 June 2014**
(Cash of A\$64.1M and bullion/dore of A\$10.1M)
- **The cash includes A\$30.9M (gross) that was received in mid-April from the retail component of the capital raising.**
- **Continued focus on optimising facilities over time, particularly in conjunction with Akara IPO and funding development projects.**

Akara Debt Facilities

- **US\$105M multi currency amortising loan facility, with quarterly payments to Nov '18**
- **Undrawn US\$15M working cap facility**

Kingsgate Debt Facilities

- **A\$25M Akara Resources PCL Pre-IPO Bond (maturity 31 July 2015)**
- **A\$10M amortising corporate loan facility (matures over FY2015 financial year)**



Outlook

- **Group gold production for the fiscal year FY2015 is expected to be 195,000 to 215,000 ounces gold.**
- **Chatree production expected to be 130,000 to 140,000 ounces.**
- **Challenger production expected to be 65,000 to 75,000 ounces.**
- **Nueva Esperanza optimisation work to continue while EIA addendum is under review by the authorities.**
- **Bowdens EIS and DFS work aligned for completion in 2014.**
- **Focus remains on initiatives to lower costs and maximise shareholder returns.**

Kingsgate Consolidated Limited



Shares: 224 Million

Market Cap: ~A\$200 Million

ASX: KCN

www.kingsgate.com.au



Appendix

General Disclaimer:

The information contained in this presentation is for informational purposes only and does not constitute an offer to issue, or arrange to issue securities or other financial products. The information contained in this presentation is not investment or financial product advice and has been prepared without taking into account the investment objectives, financial situation or particular needs of any person. To the maximum extent permitted by law, none of Kingsgate Consolidated Limited, its directors, employees or agents, nor any other person accepts any liability including without limitation any liability arising out of fault or negligence for any loss caused from the use of the information contained in this presentation. No representation or warranty, express or implied, is given as to the accuracy, completeness or correctness, likelihood of achievement or reasonableness of any forecasts or other forward looking statements.

Competent Persons Statements:

In this report, information concerning Thailand operations relates to Exploration Results, Mineral Resources and Ore Reserve estimates is based on and fairly represents information compiled by the following Competent Persons: Ron James, Brendan Bradley Kevin Woodward and Suphanit Suphananthi who are employees of the Kingsgate Group. All except Brendan Bradley are members of The Australasian Institute of Mining and Metallurgy; Brendan Bradley is a member of the Australian Institute of Geoscientists. These people qualify as Competent Persons as defined in the Australasian code for Reporting of Exploration Results, Mineral Resources and Ore Reserves (the JORC Code, 2012 edition) and possess relevant experience in relation to the mineralisation of being reported herein as Exploration Results, Mineral resources and Ore reserves. Each Competent Person has consented to the Public reporting of these statements and the inclusion of the material in the form and context in which it appears.

In this report, the information concerning Challenger operations that relates to Exploration Results, Mineral Resources and Ore Reserves estimates is based on and fairly represents information compiled by Stuart Hampton and Luke Phelps who are full-time employees of the Kingsgate Group. Both are members of The Australasian Institute of Mining and Metallurgy. These persons have sufficient experience that is relevant to the mineralisation and type of deposit under consideration and to the activity that they are undertaking to qualify as Competent Persons as defined in the 2012 Edition of the 'Australasian Code for Reporting of Exploration Results, Mineral Resources and Ore Reserves'. Paul Androvic and Tim Benfield consent to the inclusion in the report of the matters based on their information in the form in which it appears.

The information in this report that relates to Bowdens and Nueva Esperanza Mineral Resource estimation is based on and fairly represents work completed by Jonathon Abbott who is a full-time employee of MPR Geological Consultants and a member of the Australian Institute of Geoscientists and Mr Ron James. Mr Abbott and Mr James have sufficient experience that is relevant to the style of mineralisation and type of deposit under consideration and to the activity that he is undertaking to qualify as a Competent Person as defined in the 2012 Edition of the 'Australasian Code for Reporting of Exploration Results, Mineral Resources and Ore Reserves'. Mr Abbott and Mr James consent to the inclusion in the report of the matters based on his information in the form and context in which it appears.



Chatree

Chatree Ore Reserves as at 30 April 2013 (>0.35g/t gold cut-off grade)

Source	Category	Tonnes	Gold Grade	Silver Grade	Gold Contained	Silver Contained	AuEq
		(million)	(g/t)	(g/t)	(Moz)	(Moz)	(Moz)
From Pits	Proven	45.4	0.87	7.8	1.27	11.39	
	Probable	14.8	0.78	6.0	0.37	2.86	
Stockpiles		9.3	0.58	9.3	0.17	2.78	
Chatree Total	Total	69.5	0.81	7.6	1.82	17.04	

Chatree Mineral Resources as at 30 April 2013 (>0.3g/t gold cut-off grade)

Source	Category	Tonnes	Gold Grade	Silver Grade	Gold Contained	Silver Contained	AuEq
		(million)	(g/t)	(g/t)	(Moz)	(Moz)	(Moz)
From Pits	Measured	92.8	0.72	6.60	2.15	19.7	
	Indicated	49.8	0.64	4.69	1.02	7.51	
	Inferred	45.7	0.58	3.81	0.85	5.60	
Chatree Total	Total	188.3	0.66	5.42	4.03	32.8	

Competent Persons Statement. Information in this presentation relates to Exploration Results, Mineral Resource and Ore Reserve estimates based on and fairly represents information compiled by the following Competent Persons: Ron James, Brendan Bradley, Kevin Woodward and Suphanit Suphananthi who are employees of the Kingsgate Group. All except Brendan Bradley are members of The Australasian Institute of Mining and Metallurgy. Brendan Bradley is a member of The Australian Institute of Geoscientists. These people qualify as Competent Persons as defined in the Australasian Code for Reporting of Exploration Results, Mineral Resources and Ore Reserves (the JORC Code, 2012 edition) and possess relevant experience in relation to the mineralisation being reported herein as Exploration Results, Mineral Resources and Ore Reserves. Each Competent Person has consented to the Public Reporting of these statements and the inclusion of the material in the form and context in which it appears.



Challenger

Challenger Ore Reserves as at 30 June 2013

Source	Category	Tonnes	Gold Grade	Gold Contained
		(million)	(g/t)	('000 oz)
From Mine	Proven	0.25	5.52	40
	Probable	0.22	8.30	60
Challenger Total	Total	0.47	6.82	100

Challenger Mineral Resources as at 30 June 2013

Source	Category	Tonnes	Gold Grade	Gold Contained
		(million)	(g/t)	('000 oz)
From Mine	Measured	0.44	8.97	130
	Indicated	1.04	10.6	350
	Inferred	0.68	12.1	260
Challenger Total	Total	2.16	10.7	750

Competent Persons Statement. The information in this presentation that relates to Exploration Results, Mineral Resources or Ore Reserves is based on and fairly represents information compiled by Stuart Hampton and Luke Phelps who are full-time employees of the Company and both are members of The Australasian Institute of Mining and Metallurgy. All those named above have sufficient experience, which is relevant to the style of mineralisation and type of deposit under consideration and to the activity which they are undertaking, to qualify as Competent Persons as defined in the 2012 Edition of the 'Australasian Code for Reporting of Exploration Results, Mineral Resources and Ore Reserves' and consent to the inclusion in the report of the matters based on their information in the form and context in which it appears.



Nueva Esperanza

Nueva Esperanza Ore Reserves

(0.5g/t AuEq60 cut-off grade)

Category	Tonnes	Gold Grade	Silver Grade	Gold Equiv Grade	Gold Contained	Silver Contained	AgEq Contained	AuEq Contained
	(millions)	(g/t)	(g/t)	(g/t)	(Koz)	(Moz)	(Moz)	(Moz)
Proved	-	-	-	-	-	-	-	-
Probable	17.1	0.27	97	1.89	148	53.5	62.5	1.04
Total	17.1	0.27	97	1.89	148	53.5	62.5	1.04

Nueva Esperanza Mineral Resources as at 30 June 2013

(0.5g/t AuEq60 cut-off grade)

Category	Tonnes	Gold Grade	Silver Grade	Gold Equiv Grade	Gold Contained	Silver Contained	AgEq Contained	AuEq Contained
	(millions)	(g/t)	(g/t)	(g/t)	(Koz)	(Moz)	(Moz)	(Moz)
Measured	1.5	0.01	101	1.69	1.0	4.9	4.9	0.08
Indicated	21.3	0.28	88	1.74	190	60.2	71.6	1.19
Inferred	6.1	0.3	67	1.4	60	13.0	16.8	0.28
Total	28.9	0.27	84	1.67	251	78.2	93.3	1.56

Notes: Au = gold; Ag = silver; M = million; g/t = grams per tonne; MOz = million ounces.

1. In situ density 2.0 t/bcm, based on 350 measurements at Arqueros. 2. Gold equivalent on basis of gold/silver revenue ratio of 60; calculated as Au + Ag/EQ (gold plus [silver divided by 60]). 3. Silver equivalent on the basis of gold/silver revenue ratio of 60; calculated as Au x EQ + Ag ([gold times 60] plus silver). 4. EQ = (Price Gold x Recovery Gold) / (Price Silver x Recovery Silver). 5. Price basis US\$1,380/oz Au and US\$21.50/oz Ag. 6. Metallurgical recovery basis 70% Au and 75% silver. 7. It is the company's opinion that all the elements included in the metal equivalents calculation have a reasonable potential to be recovered. 8. Rounding of numbers may generate rounding errors.



Bowdens

Bowdens Mineral Resources as at 30 June 2013

(30g/t AgEq cut-off grade)

Category	Tonnes (million)	Grade				Contained Metal		
		Silver g/t	Lead %	Zinc %	AgEq g/t	Silver (Moz)	AgEq (Moz)	AuEq (Moz)
Measured	23.6	56.6	0.31	0.41	74.5	43.0	57	1.25
Indicated	28.4	48.0	0.27	0.36	63.6	43.8	58	1.28
Meas & Ind	52.0	51.9	0.29	0.38	68.6	86.8	115	2.53
Inferred	36	41	0.3	0.4	58	47.5	68	1.47
Total	88.0	47.4	0.29	0.39	64.4	134.1	182	4.00

Notes:

1. Rounding of numbers may generate rounding errors. 2. NSR metallurgical recoveries of 72% Ag, 75% Pb, and 66% Zn estimated from test work by Kingsgate. NSR or net smelter return metallurgical recovery is defined as the payable metal recovered after allowing for smelter deductions, which includes deductions for precious metals. 3. Price basis Ag US\$26.33/oz, Pb US\$2,206/t and Zn US\$2,111/t 4. Bowdens silver equivalent equation (AgEq) g/t = Ag (g/t) + 27.5 x Pb (%) + 22.8 x Zn (%) 5. It is the company's opinion that all the elements included in the metal equivalents calculation have a reasonable potential to be recovered. 6. Cut-off grade for Bowdens is 30g/t AgEq.

Kingsgate Group Metal Equivalent Notes:

#1. Nueva Esperanza silver equivalent: $AgEq (g/t) = Ag (g/t) + Au(g/t) \times EQa$. Gold Equivalent: $AuEq (g/t) = Au (g/t) + Ag (g/t)/EQa$; $EQa = (\text{price gold} * \text{recovery gold}) / (\text{price silver} * \text{recovery silver})$. Calculated from prices of US\$1380/oz Au and US\$21.50/oz Ag, and metallurgical recoveries of 70% Au and 75% Ag estimated from test work by Kingsgate and Laguna. #2. Bowdens silver equivalent: $AgEq (g/t) = Ag (g/t) + 27.5 \times Pb (\%) + 22.8 \times Zn (\%)$. Calculated from prices of US\$26.33/oz Ag, US\$2,206/t Pb, US\$2,111/t Zn and NSR recoveries of 72% Ag, 75% Pb, and 66% Zn estimated following test work by Kingsgate. #3. Bowdens gold equivalent: $AuEq (g/t) = 45 (\text{gold price} / \text{silver price})$. Calculated from prices of US\$1200/oz Au, US\$26.33/oz Ag. #4. Chatree gold equivalent: $AuEq/t = Au (g/t) + Ag (g/t) / EQa$. EQa see note 1 above. Calculated from prices of US\$1480/oz Au and US\$26/oz Ag and metallurgical recoveries of 80.5% Au and 43.6% silver based on metallurgical test work and plant performance. #5. Cut-off grade for Chatree is 0.35g/t Au; Nueva Esperanza is 0.5g/t AuEq; Bowdens is 30g/t AgEq. #6. In the company's opinion, the silver, gold lead and zinc included in the metal equivalent calculations have a reasonable potential to be recovered.

